

Frigidaire

Factory Parts Catalog

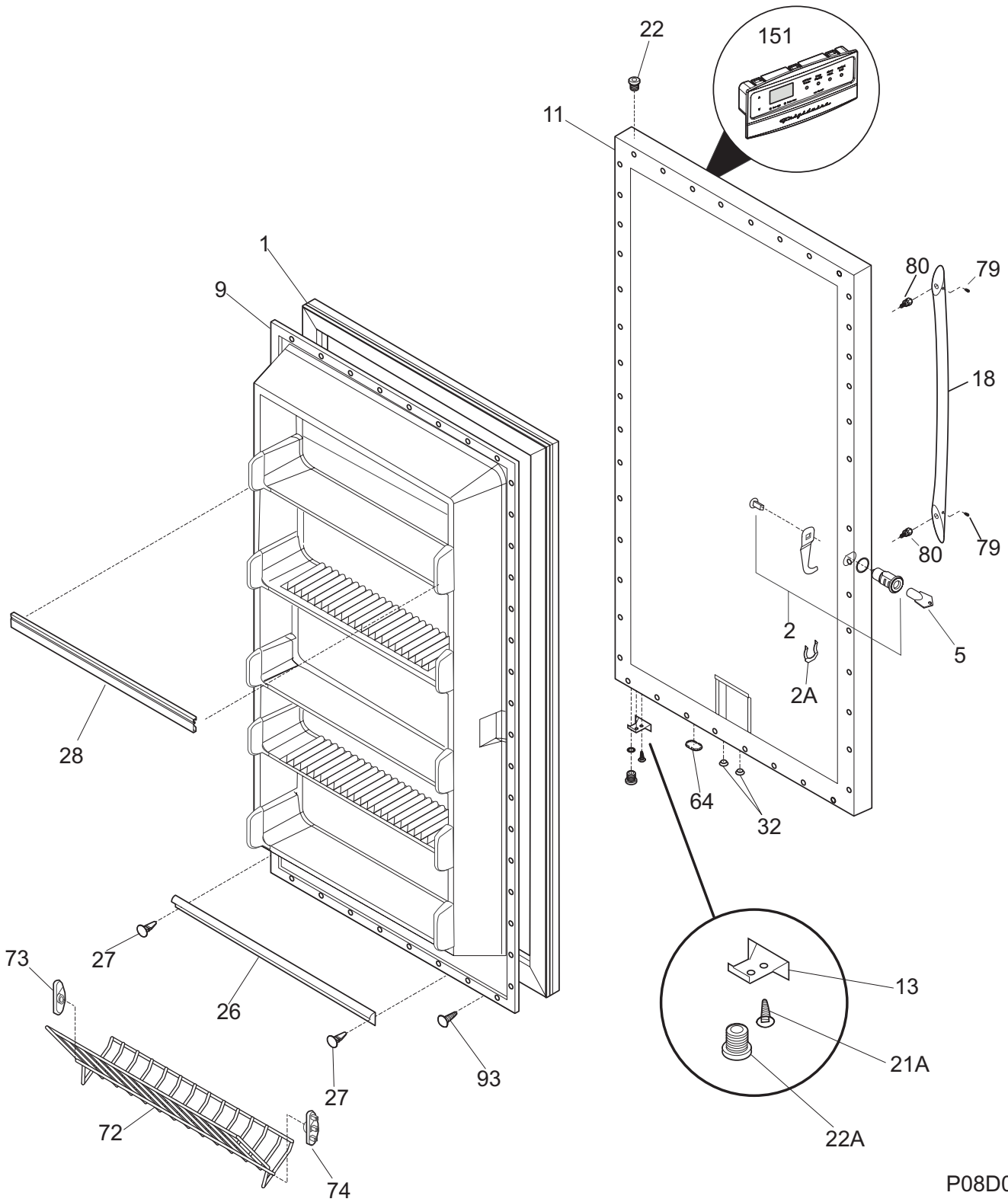
Product No.	FFU14F7HBB
Series	Precision
Color	black
Volts	115
Wiring Diagram	297246001
Owner's Guide	297245700
Market	North America
Energy Guide	216795318

UPRIGHT FREEZER

Model No.
FFU14F7HBB

Publication No.
5995515342
08/05/23
(EN/SERVICE/MLR)
365

DOOR

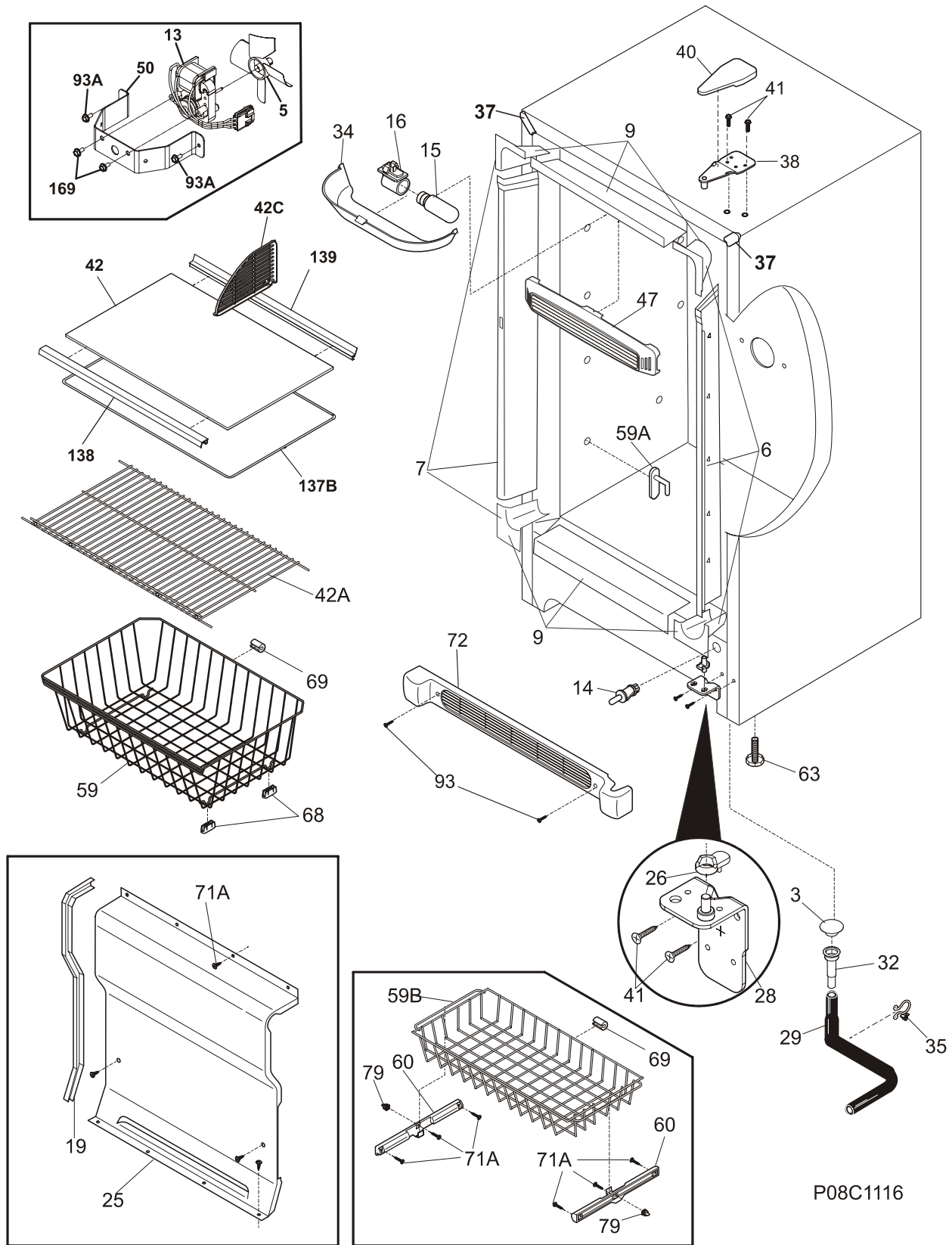


P08D0567

DOOR

POS. NO	PART NO.	DESCRIPTION
1	216522307	Gasket-door, black
2 #	297213400	Lock Assy
2A	297213300	Clip, spring
5	297147700	Key, lock
9	216527615	Panel-inner door, frzr
11	297236008	Panel-outer door, black
13	297257000	Door Stop, chrome, RH/LH
18	297031801	Handle, upright, black, w/set screw
*	240537301	Nut-anchor, door hdl screw
21A	297197500	Screw, door stop mtg, FH38-16X.750, P Twin
22	216970800	Bearing, hinge w/o'ring, top
22A	297006800	Bearing-hinge, btm, w/o'ring
26	216524300	Gasket, secondary
27	5303212828	Clip, panel mtg
27*	5304406520	Clip, panel mtg kit, (40)
28	216951601	Rack-door, (4)
32	5309950074	Valve, breather
64	216403700	Plug-button, hole filler, door base
72	297118101	Shelf, tilt out, tall, wire
73	216513900	End Cap, shelf, LH, tilt-out
74	216514000	End Cap, shelf, RH, tilt-out
79	218755404	Screw-set, 10-32 x 1.100
80	218755504	Screw-shoulder, #10 AB, handle mounting
93	5304460605	Screw, ph truss head, 8-18AB x 0.500
151#	297241901	Control-electronic, assy, black, 115V

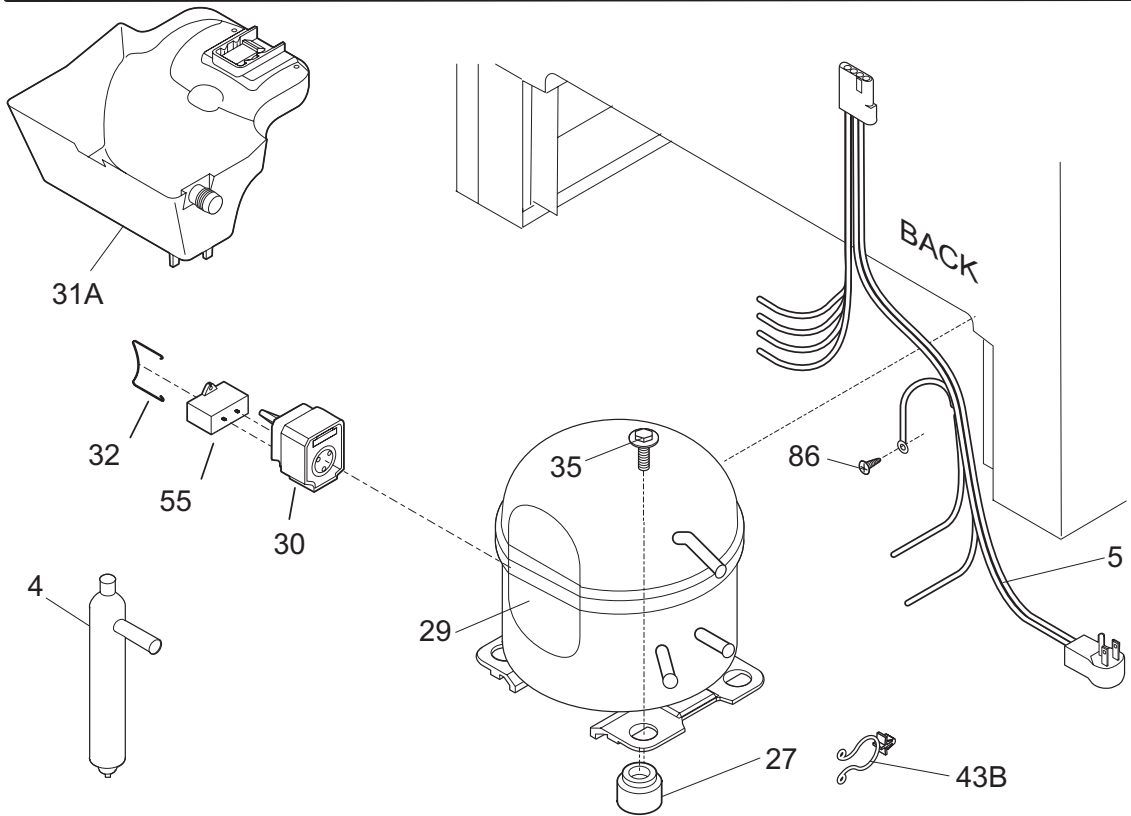
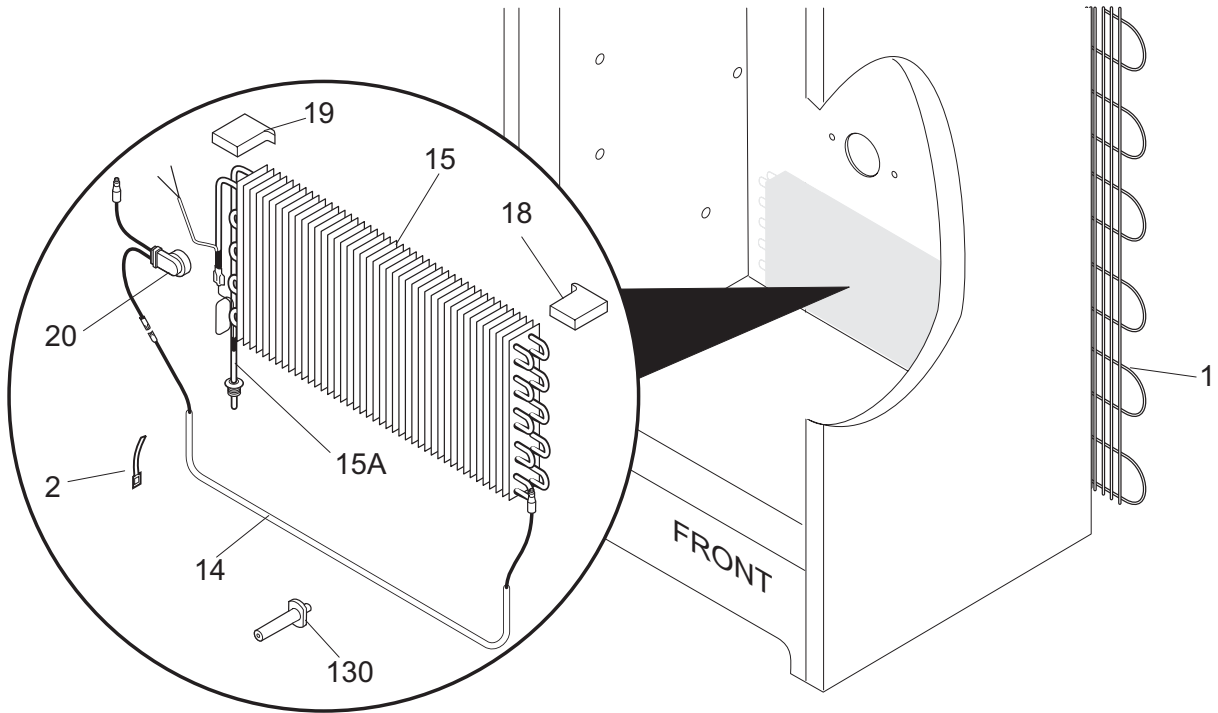
CABINET



CABINET

POS. NO	PART NO.	DESCRIPTION
3	216503100	Screen-drain
5 #	216325600	Fan Blade
6	297200300	Breaker Kit w/corners, no lock slot
7	297200500	Breaker Kit w/corners, incl lock catch
9	297200200	Breaker Kit w/corners, 28", top and bottom
13	216934100	Motor, fan, 115 V
14	297243801	Switch, light/lamp, black, plunger
15	216988100	Light Bulb/Lamp, long, blue tint, 40 W, 120V
16	216817601	Socket, light/lamp, 25 W
19	216204900	Gasket, evap cover
25	297098651	Cover-evaporator
26	216503300	Ramp, door closer
28	297240800	Hinge-bottom, stepped pin
29	216313504	Hose-drain
32	5308005500	Drain
34	297184400	Shield-light
35	216273000	Clip, drain hose
37	241611303	Trim-cabinet corner, black, (2)
38	297164300	Hinge-upper
40	297164401	Cover-upper hinge, black
41	297236200	Screw, tamper proof, 1/4-20 x 5/8
42	297166803	Glass-shelf
42A	297119900	Shelf, 14.50 X 23.88, white
*	216502400	Grommet-shelf mtg
42C	297183802	Divider, blue, glass shelf
47	297192902	Baffle, air, blue
50	216394050	Bracket, fan motor mount
59	297210700	Basket
59A	216486500	Stop-basket, (2)
59B	297209800	Basket
60	297013500	Slide, basket
63	216396900	Screw, leveling foot, plastic, adjustable
68	08009560	Glide-basket, (4)
69	5305878546	Bumper-basket, (4)
71A	297146800	Screw, 8-18AB x 0.470, EVAP PANEL
72	297199001	Grille/Kickplate, 28", black
79	3017666	Nut-insert
93	5304460605	Screw, ph truss head, 8-18AB x 0.500
93A	216629601	Screw, hex washer head, 10-16 x 0.500, tapping
137B	297166903	Frame
138	297232302	Trim-shelf, front
139	297232202	Trim-shelf, rear
169	216912401	Screw, hex washer head, 8-32 x 0.500, bracket fan mtr, (2)
*	216795318	Energy Guide
*	297249900	Instructions, elect guide, Precision
*	297257400	Label, start guide
*	297001704	Insulation, 24", drain tube

SYSTEM



P08S0482

SYSTEM

POS. NO	PART NO.	DESCRIPTION
1 #	5300123788	Condenser
2	5308000110	Strap-evap/heater, aluminum, (2)
4	216987500	Drier-filter
5 #	297237600	Harness-main
14	216740000	Heater-defrost
15 #	216997200	Evaporator
15A	216565700	Heat Exchanger
18	297078700	Insulator-evap, styrofoam
19	297078800	Insulator-evap, styrofoam
20	216872200	Thermostat, defrost
27	5308002681	Grommet, compressor
29 #	297223600	Compressor, w/o electricals
30	216954214	Controller, compressor
31A	297216900	Pan-drain
32	216954300	Clip, controller
35	297177200	Bolt, compressor
43B	297048400	Clip
55 #	216236200	Capacitor-run, 180-200 VAC, 15 microfarad
86	216036601	Screw, RWHD, 8-32A x 0.500, GX-CA
130	297244700	Support, evaporator mtg
*	216502500	Sleeve, suction line
*	240555002	Screw-#8-32 X 3/8
*	297014500	Plug-suction line
*	297018400	Thermistor
* #	297169900	Cord-power, flat